

HDL[®]

HDL[®]

**2020
PRODUCT
OVERVIEW**

2020 Edition

sales@hdlautomation.com



www.hdlautomation.com

Control Panels



Granite Display

HDL-MPTL4C.48



S10/10 Inch Touch Screen

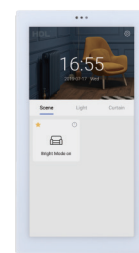
HDL-MTS10B.2WI



Granite Button Panel

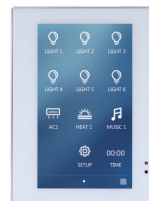
HDL-MP4C.48

- EU standard - US standard



S57 Touch Panel

HDL-MTS57.1WI



Enviro Panel

HDL-MPTLC43.46-A



Tile

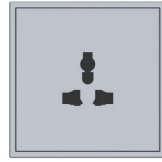
HDL-MPL6B-TILE.48



Available With
 - 1 Buttons
 - 2 Buttons
 - 4 Buttons

Tile Series 4 Buttons Panel

HDL-MP4B/TILE.48



Tile Series 4 Buttons Panel

HDL-MP1-S-M-EU/TILE.48
 - Visit our website for more info.



LCD Touch Thermostat

HDL-MPTAC01.48-A
 - EU standard



Available With
 - 2 Buttons
 - 4 Buttons
 - 6 Buttons (US)

iTouch Series Panel

HDL-MPT4.48-A
 - EU standard - US standard



Prism Series Panel

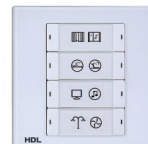
HDL-MPTFL11.46
 - US standard

Available With
 - 2 Buttons
 - 4 Buttons
 - 6 Buttons



Prism Buttons Panel

HDL-MPTF02.48
 - EU standard - US standard

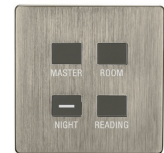


Available With
 - 2 Buttons
 - 4 Buttons
 - 6 Buttons
 - 8 Buttons

iFlex Series Panel

HDL-MP8B.48-A
 - EU standard - US standard

Available
 - 1 Button
 - 2 Button
 - 4 Button
 - 8 Button



iElegance Series Panel

HDL-MPH104.48



DLP Touch Panel

HDL-MPTL14.46-A
 - US standard



DLP Smart Panel

HDL-MPL8.48-A
 - EU standard - US standard



Titan Series Panel

HDL-MP6S/Titan.48



Intelligent Hotel Door Bell

HDL-MHB.1010



RF Intelligent Door Bell and Access Reader

HDL-MHBRF.1010



RF Intelligent Door Bell and Access Reader

HDL-MPTB01.RF.48



RF Card Reader & Master Control

HDL-MHIC.48



RF Card Reader & Master Control

HDL-MPTC03.48

Power Interfaces



RF Card Reader & Master Control

HDL-MPTC03.46



Panel Power Interface EU

HDL-MPPI/TILE.48



Panel Power Interface EU

HDL-MPLPI.48-A



Panel Power Interface US

HDL-MPLPI.46-A



Panel Power Interface EU

HDL-MPPI.48



Panel Power Interface US

HDL-MPPI.46

Controllers/Actuators

Dimmers



Leading Edge Dimming Actuator

HDL-MD0206.432

Available With

- 2 CH 6A
- 4 CH 3A
- 6 CH 2A



Trailing Edge Dimming Actuator

HDL-MDT0601.433

Available With

- 2 CH 3A
- 4 CH 1.5A
- 6 CH 1A



2CH 10A Mosfet Power Amplifier

HDL-MDB0210.433



IOU Mix Control Actuator

HDL-MHI0U-II.432



Traic Constant Current Module

HDL-MCR01A.40



64CH DALI Ballast Dimming Actuator

HDL-MC64-DALI.431



6CH 10A 0-10V Ballast Dimming Actuator

HDL-MRDA0610.432



6CH 5A Intelligent LED Dimming Actuator

HDL-MDLED0605.432



6CH input & output Module

HDL-MSC06.432



High Performance Dimmer

HDL-MDH0610A.4D



6CH 10A High Power Leading Edge Dimming Actuator

HDL-MDH0610



6CH 20A High Power Leading Edge Dimming Actuator

HDL-MDH0620



12CH 10A High Power Leading Edge Dimming Actuator

HDL-MDH1210

Relays



4CH 10A High Power Switch Actuator

HDL-MR0410.431

Available With

- 4 CH
- 8 CH
- 12 CH



4CH 16A High Power Switch Actuator

HDL-MR0416.431



12CH 20A High Power Switch Actuator with Current Detection

HDL-MR1220C.433

Hotel Room Controllers



Hotel Room Control Host

HDL-MHC48IP.431



Hotel Room Control Host

HDL-MH48IP/D.231



4CH 0.5A Universal Dimming Actuator

HDL-MHD04A.231



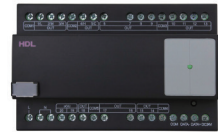
5CH High Power Switch Actuator

HDL-MHR05L.231



10CH Hotel Room Mix Control Module

HDL-MHMIX10.231



20CH Hotel Room Mix Control Module

HDL-MHD02R18U.232



22CH Hotel Room Mix Control Module

HDL-MHMIX22.232



RCU Room Control Unit

HDL-MHRCU.433

Shading Control



2Ch Motorized Curtain Control Module

HDL-MW02.431



Buspro Blinds Motor 220V AC

HDL-MVSM35B.20



Buspro Curtain Motor

HDL-MWM65B.20



Buspro Curtain Motor With Adapter

HDL-MWM65B.20



Dry Contact Curtain Motor

HDL-230



Dry Contact Curtain Motor With Adapter

HDL-210



Curtain Remote Controller

HDL-YR2112



Curtain Remote Controller

HDL-YR2116



Buspro Curtain Motor Track

DMX Controllers



48CH DMX Scene Controller

HDL-MC48IP-DMX.431



512CH DMX Scene Controller

HDL-MD512-DMX.232



3CH 650mA LED Driver

HDL-MLED03650mA

Climate control



CoolBox VRV Gateway

HDL-MAC/GW.431



4CH Electric Fan Controller

HDL-MFAN04.432



Air Conditioning Control Module

HDL-MAC01.431



6CH Floor Heating Module

HDL-MFH06.432

Dry Contact / IR Emitters



4 Zone Dry Contact Module with Temp. Sensor

HDL-MSD04T.40



8 Zone Dry Contact Module

HDL-MSD08.40



24 Zone Dry Contact Module

HDL-MS24.232



51 Zone Dry Contact Module

HDL-MHS51.231



4CH IR Emitter with Current Detection

HDL-MIRC04.40



Smart IR Transmitter with Current Detection

HDL-MIR01F.20



Infrared Code Learner

HDL-MIR01L



Detects
- Temperature
- Movement
- Light Intensity

Surface Mount 8in1 Sensor

HDL-MSP08M.4C



Detects
- Movement
- Light Intensity

Recess Mount Ultrasonic Sensor

HDL-MSPU03.4C



Detects
- Movement
- Light Intensity

Recess Mount PIR & LUX Sensor

HDL-MSP02.4C



Detects
- Temperature
- Movement
- Light Intensity

Surface Mount 12in1 Sensor

HDL-MS12.2C



Detects
- Humidity
- Temperature
- Light Intensity

Surface Mount Temp. Humidity & LUX Sensor

HDL-MASTH.2C



Detects
- Air Quality
- Light Intensity

Surface Mount Lux & Air Quality Sensor

HDL-MASLA.2C

Sensors



Detects
- Temperature
- Movement
- Light Intensity

Surface Mount Indoor Microwave sensor

HDL-MSW01.4C



Detects
- Temperature
- Movement
- Light Intensity

Surface Mount 7in1 Sensor

HDL-MSP07M.4CT



Detects
- Humidity
- Temperature
- Movement
- Light Intensity

Wall Mount Outdoor Microwave Sensor

HDL-MSOUT.4W



HDL HomePlay Network Player

HDL-MZBOX-A50B.30

Audio

Gateway



1 Port Programming Gateway

HDL-MBUS01IP.431



RS232/RS485 Gateway

HDL-MRS232U.431



2400mA Power Supply Module

HDL-MSP2400.232



Security Command Module

HDL-MSM.431



Buspro-RS485 Interface Mini

HDL-M485/GW.40



HDL-BUS and KNX-EIB Interface Converter

HDL-MCEIB.231



Logic Automation Module

HDL-MCLog.431



HDL BUS 6 Lines

HDL-MBC06.431

System Devices



750mA Power Supply Module

HDL-MSP750.431



1200mA Power Supply Module

HDL-MSP1200.431



HDL 6 Ports Switch

HDL-MBR06.431



HDL IntelliCenter Model 2

HDL-MSERVER/D.20

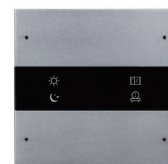
iRidium Server

Control Panels



Granite Display Panel

HDL-M/PTL4.1



Granite Button Panel

HDL-M/P2R.1-48

- EU Standard - US Standard



4.3 inch Enviro Touch Screen

HDL-M/MPTLC43.1-A2-46



Tile

HDL-M/PTOL6.18



Available With

- 1 Buttons
- 2 Buttons
- 4 Buttons

Tile Series 4 Buttons Panel

HDL-M/PT4RA.1



Tile Series 4 Buttons Panel

HDL-MP1-S-M-EU/TILE.48

- Visit our website for more info.



DLP Touch Panel

HDL-M/MPT14.1-A2-46

- US Standard

Available With
- 2 Buttons
- 4 Buttons
- 6 Buttons(US)



iTouch Series Panel

HDL-M/TBP4.1-A2-48

- EU Standard - US Standard



DLP Smart Panel

HDL-M/DLP04.1-A2-48

- EU Standard - US Standard

Available With
- 2 Buttons
- 4 Buttons
- 6 Buttons
- 8 Buttons



iFlex Series Panel

HDL-M/P04.2-48

- EU Standard - US Standard

Power Interfaces



TILE Power Interface EU

HDL-MPPI/TILE.48



Panel Power Interface EU

HDL-M/PCI2PE.1



Panel Power Interface US

HDL-M/PCI2PU.2



Panel Power Interface EU

HDL-M/PCI.1-A



Panel Power Interface EU

HDL-M/PCI.1



Panel Power Interface US

HDL-M/PCI.3-A



Panel Power Interface US

HDL-M/PCI.3

Controllers/Actuators

Dimmers



Universal Dimming Actuator

HDL-M/D06.1

Available With
- 2CH 3A
- 4CH 1.5A
- 6CH 1A



DALI Master Actuator

HDL-M/DALI.1



6CH 10A Ballast Dimming Actuator

HDL-M/DA6.10.1



DMX Recorder Module

HDL-M/DMX512.1



4CH 7A RGBW Driver

HDL-M/DRGBW4.1



17CH Mix Actuator
HDL-M/MHR17U.1



19CH Mix Actuator
HDL-M/MHD02R17U.1

Relays



4CH 16A High Power Energy Management Switch Actuator
HDL-M/R4.16.1-CD

Available With
- 4CH
- 8CH
- 12CH



8CH 16A High Power Switch Actuator
HDL-M/R8.16.1

Available With
- 4CH
- 8CH
- 12CH



12CH 10A High Power Switch Actuator
HDL-M/R12.10.1

Available With
- 4CH
- 8CH
- 12CH

IR Emitters



Infrared Emitter
HDL-M/IRAC.1



Infrared Code Learner
HDL-MIR01L

Climate Control



CoolBox VRV Gateway
HDL-M/CBVRV.GW.1



FCU & Floor Heating Actuator
HDL-M/FCU01.10.1



FCHC Actuator
HDL-M/FCHC.4.1

Shading Control



4CH 10A Curtain Actuator
HDL-M/W04.10.1



KNX Blind Motor
HDL-M/AG40B.1



Buspro Curtain Motor Track



Buspro Curtain Motor

HDL-M/S410.1



Buspro Curtain Motor With Adapter

HDL-M/S410.1



Dry Contact Curtain Motor

HDL-230



Dry Contact Curtain Motor With Adapter

HDL-210



Curtain Remote Controller

HDL-YR2112



Curtain Remote Controller

HDL-YR2116

System Controller



RS485 Interface Mini

HDL-M485/GW.40



960mA Power Supply Module

HDL-M/P960.1

Sensors



Master/Slave Timer Controller

HDL-M/TM04.1



Recess Mount Presence Sensor

HDL-M/SIS05.1



Surface Mount OmniSense Sensor

HDL-M/HSD24.1

Detects
- Light Intensity
- Temperature
- Movement



Wall Mount Outdoor Microwave Sensor

HDL-M/WS05.1-A

Detects
- Humidity
- Light Intensity
- Temperature
- Movement



Surface Mount Indoor Microwave Sensor

HDL-M/WS05.1-D

Detects
- Light Intensity
- Temperature
- Movement



Recess Mount PIR & Lux Sensor

HDL-M/WS05.1

Detects
- Light Intensity
- Movement



Recess Mount Ultrasonic Sensor

HDL-M/US05.1

Detects
- Movement
- Light Intensity



Surface Mount PIR & Lux Sensor

HDL-M/HS05.1

Detects
- Light Intensity
- Temperature
- Movement

Gateways / Dry Contact



4 Zone Dry Contact Module
HDL-M/S04.1



8 Zone Dry Contact Module
HDL-M/S08.1



24 Zone Dry Contact Module
HDL-M/S24.1



48 Zone Dry Contact Module
HDL-M/S48.1

Infrastructure Devices/Accessories



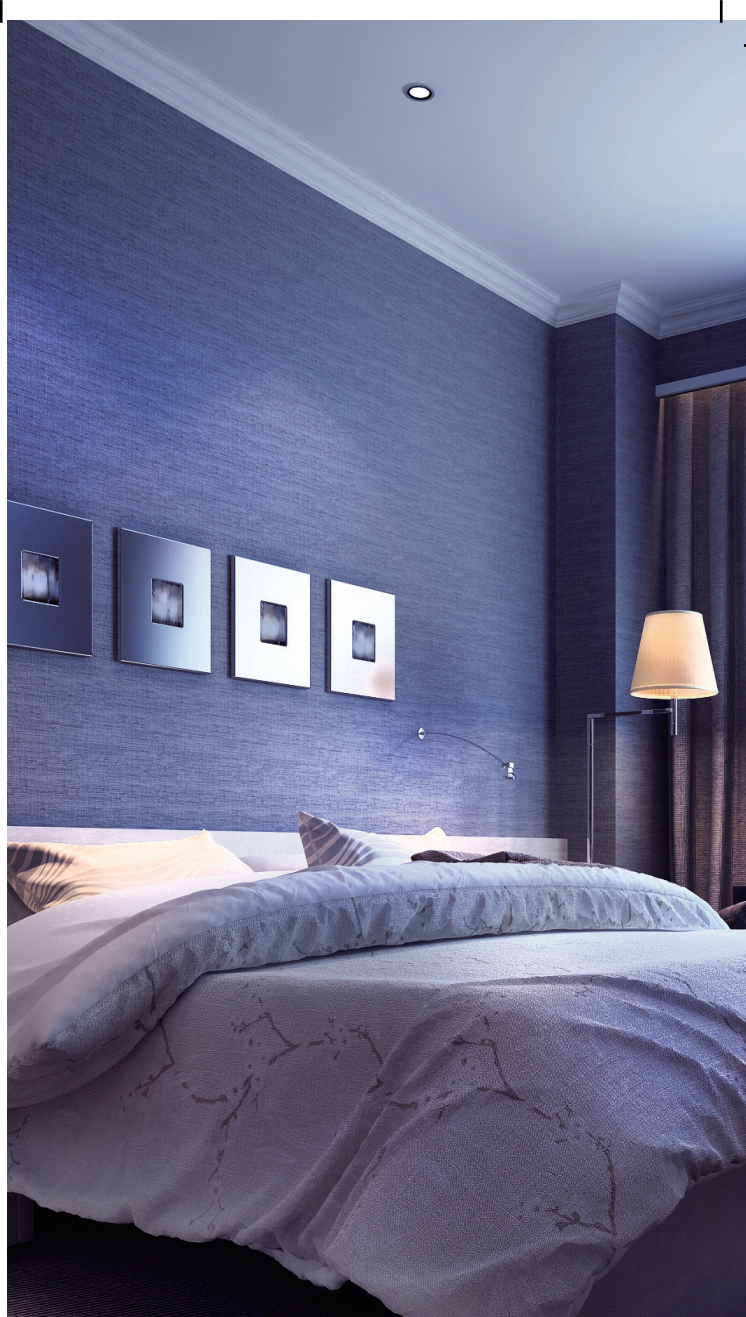
IP Router
HDL-M/IPRT.1



USB Interface
HDL-M/USB.1



Line Coupler
HDL-M/LCR.1



buspro
WIRELESS

Control Panels



DLP Series Panel

HDL-MPL8-RF.18-A
- EU standard - US standard



iTouch Series Panel

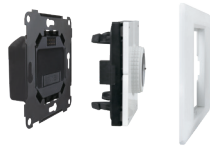
HDL-MPT4-RF.18-A
- EU standard - US standard

Available With
- 2 Buttons
- 2 Buttons
- 2 Buttons(US)



iSmart Panel

HDL-MPE04-RF.18



Power Interface iSmart Panel Frame



3CH Wireless Dimming Power Interface US (L Type)

HDL-MPWPID03L.16-A
- EU standard - US standard



3CH Wireless Dimming Power Interface US (L+N Type)

HDL-MPWPID03LN.16-A
- EU standard - US standard



Wireless Power Interface US (L+N Type)

HDL-MPWPID00LN.16-A
- EU standard - US standard

Controllers/Actuators

Dimmers



1CH Wireless Switch Power Interface US with Temp. Sensor (L+N Type)

HDL-MPWPPIR01T.16-A
- EU standard - US standard



3CH Wireless Switch Power Interface US (L+N Type)

HDL-MPWPPIR03.16-A
- EU standard - US standard



1CH Wireless Dimming Actuator (L+N Type)

HDL-MPD01-RF.28



4CH Wireless Ballast Dimming Actuator (L+N Type)

HDL-MPDA04-RF.28

Relays



**1CH Wireless
Relay Actuator
(L+N Type)**

HDL-MPR01-RF.28



**2CH Wireless
Relay Actuator
(L+N Type)**

HDL-MPR02-RF.28

Sensors



Ultrasonic & PIR Sensor

HDL-MSPU05-RF.1C



PIR & Lux Sensor

HDL-MSPU03-BRF.10

Shading Control



**1CH Wireless
Curtain Actuator
(L+N Type)**

HDL-MPC01-RF.28



Curtain Control Motor

HDL-MWM70-RF.12

Gateways / Dry Contact



**Dry Contact Module
(L+N Type)**

HDL-MPS04-RF.28



**Buspro/ Wireless
Gateway**

HDL-MBUS/GW-RF.40

IR Emitter



**Track for Master
Curtain Control Motor**

HDL-Track



IR Emitter

HDL-MIR01R-RF.10



Mesh Gateway

HDL-MCIP-RF02.10