

HDL-MPTF02.48/46 Prism Lite/Two-Button Touch Panel EU/US
 HDL-MPTF04.48/46 Prism Lite/Four-Button Touch Panel EU/US
 HDL-MPTF06.48/46 Prism Lite/Six-Button Touch Panel EU/US

buspro

Datasheet

Issued: January 14, 2019
 Edition V1.0.0



Figure 1. HDL-MPTF02.48 Figure 2. HDL-MPTF04.48 Figure 3. HDL-MPTF06.48



Figure 4. HDL-MPTF02.46 Figure 5. HDL-MPTF04.46 Figure 6. HDL-MPTF06.46

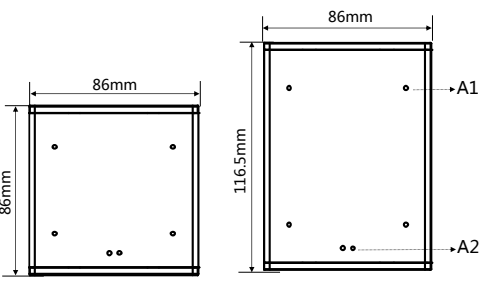


Figure 7 Figure 8

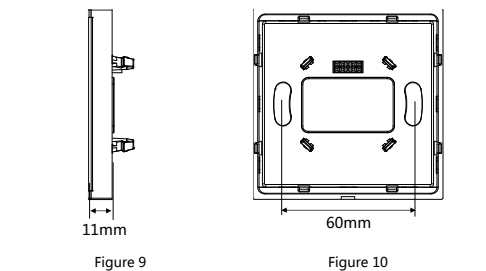


Figure 9 Figure 10

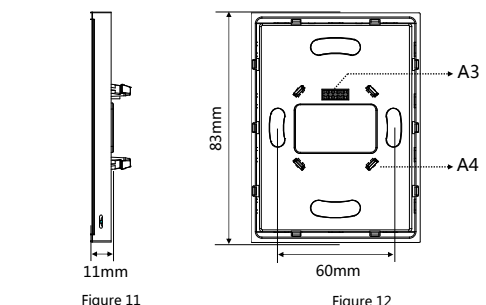


Figure 11 Figure 12

Dimensions-Take Prism Lite/Four-Button Touch Panel EU/US as an example

Figure 7 - 12. Dimensions

Overview

Prism Lite (See Figure 1-6) is a multifunction control panel for home automation, which provides convenient way to control lighting, curtain, scenes, etc. The panel will wake up automatically when it senses user approaching.

Functions

- Built-in temperature sensor and proximity sensor;
- The panel wakes up automatically;
- Key RGB indicating and sound effects;
- Security settings: Various security modes can be set, such as Vacation, Away, Day, Night, Meeting guests;
- Key Modes: Invalid, Single on/off, single on, single off, combination on/off, combination on, combination off, momentary, short/long press, short press/long momentary press, etc.;
- Key control types: Scene, Universal switch, Single channel adjustment, Broadcast scene, Broadcast channel, Curtain control, GPRS control, Panel control, Alarm control, Music play, General control etc.;
- Panel control function includes: Status indicator luminance setting etc.;
- Supports simple programming mode;
- Upgrading online via HDL Buspro is available.

Important Notes

- The panel must be wall box installation.
- The panel must work in conjunction with power interface.
- It is recommended to adopt Buspro connection - Series connection. (hand-in-hand).

Product Information

Dimensions - See Figure 7 - 12

A1. Control Button & indicator:

Control button: Used to control target. Sound effect can be set.

Indicator: It indicates status of the controlled target. When it is in on-status, the LED indicator displays the setting color for on-status; When it is in off-status off, the LED indicator displays the setting color for off-status. User can set the color and brightness of the status indicator in HDL Buspro Setup Tool.

Address modification: Keep pressing any button for 15s, all the backlights will flash, then the address of the panel can be modified via HDL Buspro Setup Tool: Submenu "address management-address modify". Afterwards, press any button to exit address setting mode and the backlights stop flashing.

A2. Proximity Sensing: Also known as wake-up function. When someone approaches the sensor, the panel backlights will be lit up (Both Energy-saving Mode and Enable Proximity Sensing should be chosen in HDL Buspro Setup Tool).

A3. Communication interface: HDL Buspro. It connects to panel power interface module.

A4. Fastener: It connects to panel power interface module.

Product installation and disassembly (Take HDL-MPTF04.48 as an example)

Installation - See Figure 13-15

- Step 1. Fix the power interface into the wall box with screws.
- Step 2. Hold the edge of the panel, then insert the panel into the power interface module vertically.

Disassembly - See Figure 16

- Step 1. Insert the panel gap with a slotted screwdriver.
- Step 2. Hold the edge of the panel, pry up the panel gently. Then the panel can be taken off.

Safety Precautions

- The installation and commissioning of the device must be carried out by HDL or the organization designated by HDL. For planning and construction of electric installations, the relevant guidelines, regulations and standards of the respective country are to be considered.
- The device should be installed in wall box. HDL does not take responsibility for all the consequences caused by installation and wire connection that are not in accordance with this document.
- Please do not privately disassemble the device or replace parts, otherwise it may cause mechanical failure, electric shock, fire or body injury.
- Please resort to our customer service department or designated agencies for maintenance service. The warranty is not applicable for the product fault caused by private disassembly.

Package Contents

Panel*1 / Datasheet*1

Technical Data

Basic Parameters

Working voltage	12~30V DC
Working current	HDL-MPTF02.48/46: 18mA/24V DC HDL-MPTF04.48/46: 27mA/24V DC HDL-MPTF06.48/46: 29mA/24V DC
Communication	HDL Buspro
Cable diameter of Buspro terminal	0.6 - 0.8mm

External Environment

Working temperature	-5°C~45°C
Working relative humidity	≤90%
Storage temperature	-20°C~60°C
Storage relative humidity	≤93%

Specifications

Dimensions	EU: 86×86×11 (mm) US: 86×116.5×11 (mm)
Net weight	EU: 106g US: 137g
Housing material	Glass, Aluminum
Installation	Wall box (See Figure 13 - 15)
Protection rating (Compliant with EN 60529)	IP20

Name and Content of Hazardous Substances in Products

Components	Hazardous substances					
	Lead (Pb)	Mercury (Hg)	Cadmium (Cd)	Chromium VI (Cr (VI))	Poly-brominated biphenyls (PBB)	Poly-brominated diphenyl ethers (PBDE)
Plastic	o	o	o	o	o	o
Hardware	o	o	o	o	-	-
Screw	o	o	o	x	-	-
Solder	x	o	o	o	-	-
PCB	x	o	o	o	o	o
IC	o	o	o	o	x	x
Glass	o	o	o	o	o	o

The symbol "-" indicates that the hazardous substance is not contained.

The symbol "o" indicates that the content of the hazardous substances in all the homogeneous materials of the component is below the limit requirement specified in the Standard IEC62321-2015.

The symbol "x" indicates that the content of the hazardous substance in at least one of the homogeneous materials of the part exceeds the limit requirement specified in the Standard IEC62321-2015.

HDL Buspro Cable

HDL Buspro	HDL Buspro Cable
24V DC	Red
COM	Black
DATA-	White
DATA+	Yellow

Technical support

E-mail: support@hdlautomation.com

Website: <https://www.hdlautomation.com>

©Copyright by HDL Automation Co., Ltd. All rights reserved.
Specifications subject to change without notice.

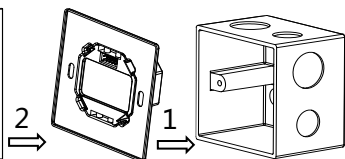


Figure 15 Figure 14 Figure 13

Figure 13 - 15. Installation

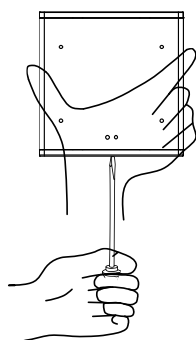


Figure 16. Disassembly